

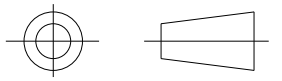
Heatshrinkable moulded shapes bulbous 2-Way Outlet Shapes, VG style - HellermannTyton

DRAWING No.
152033

SHT. 1
OF
1 SHTS.

© THE COPYRIGHT OF THIS DRAWING IS RESERVED BY HELLERMANN TYTON. IT IS ISSUED ON CONDITION THAT IT IS NOT COPIED, REPRODUCED OR DISCLOSED TO A THIRD PARTY EITHER WHOLLY OR IN PART WITHOUT THE CONSENT IN WRITING OF HELLERMANN TYTON.

THIRD ANGLE PROJECTION



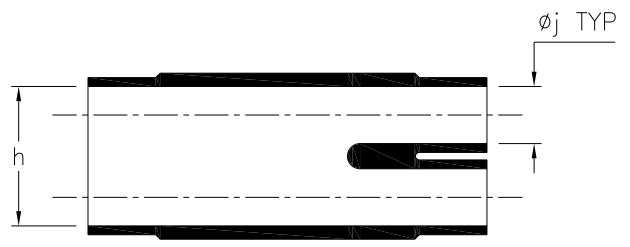
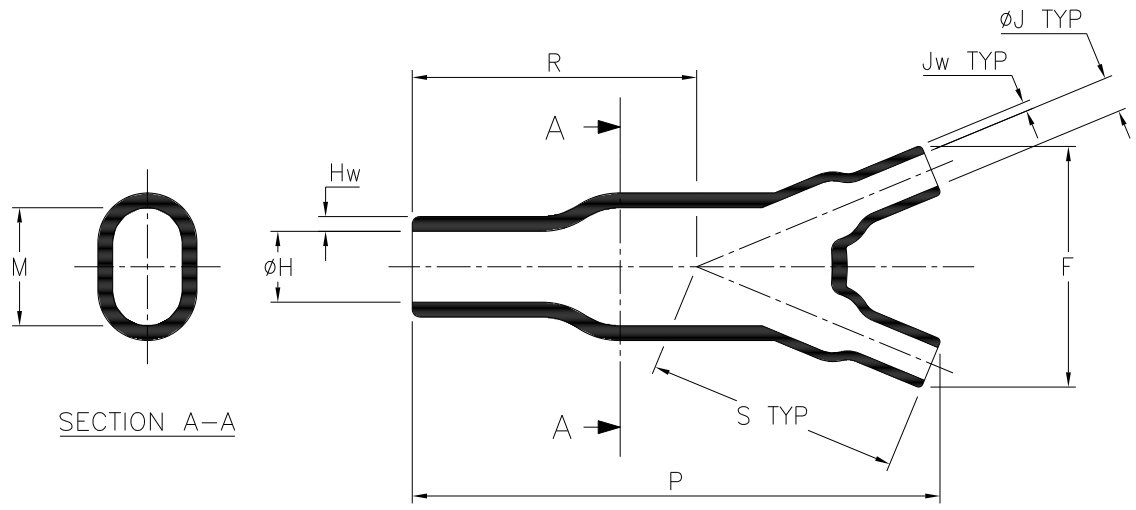
BS 8888

DO NOT SCALE
IF IN DOUBT ASK

Q.A.	H/S SETT
H/S Q.A.	REL. INSP.
H/S PROD	EXT.ISS.CODE 2/7

STANDARD PART (AFTER UNRESTRICTED RECOVERY)

EXPANDED (AS SUPPLIED)

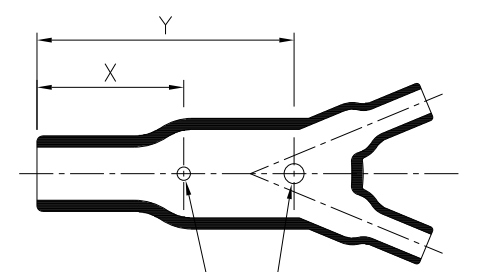


SECTION A-A

SPEC.	PART NO.	EXPANDED DIMENSIONS (AS SUPPLIED)		RECOVERED DIAMETERS		RECOVERED DIMENSIONS						
		h	øj	øH	øJ	F	M	P	R	S	Hw	Jw
		MIN	MIN	MAX	MAX	±15%	MAX	±15%	NOM	NOM	±30%	±30%
VG 95343 T08C002A	203-1	27.0 (1.06)	13.0 (.51)	12.0 (.47)	6.0 (.24)	41.0 (1.61)	23.0 (.91)	80.0 (3.15)	38.0 (1.5)	43.0 (1.69)	2.5 (.10)	1.5 (.06)
-	203-2	31.8 (1.25)	15.8 (.62)	12.0 (.47)	6.0 (.24)	41.0 (1.61)	23.0 (.91)	80.0 (3.15)	38.0 (1.5)	43.0 (1.69)	2.5 (.10)	1.5 (.06)
-	203-7	25.0 (.98)	15.0 (.59)	12.0 (.47)	6.0 (.24)	41.0 (1.61)	23.0 (.91)	80.0 (3.15)	38.0 (1.5)	43.0 (1.69)	2.5 (.10)	1.5 (.06)
-	203-9	33.0 (1.30)	22 (0.87)	12.0 (.47)	6.0 (.24)	41.0 (1.61)	23.0 (.91)	80.0 (3.15)	38.0 (1.5)	43.0 (1.69)	2.5 (.10)	1.5 (.06)

OPTIONAL FILLER PORT DETAIL			
SPEC.	PART NO.	RECOVERED DIMENSIONS	
		X	Y
		±20%	±20%
VG 95343 T09C002A	203-1	33.0 (1.30)	53.0 (2.09)
-	203-2	33.0 (1.30)	53.0 (2.09)
-	203-7	33.0 (1.30)	53.0 (2.09)
-	203-9	33.0 (1.30)	53.0 (2.09)

OPTION TO STANDARD PART
FILLER PORT (CODE P)



1 DRAIN HOLE ø3.0 NOM (.12)
1 FILLER PORT ø4.5 NOM (.18)

Heatshrinkable moulded shapes bulbous 2-Way Outlet Shapes, VG style - HellermannTyton

For information only, not subject to technical changes.

4	P1329	G.B.	11/10/10
3	P1225	G.B.	15/08/08
2	P1224	G.B.	11/08/08
1	P1185	S.Almond	26/03/08
ISSUE	NOTE No.	DRAWN	DATE

HellermannTyton

Pennycross Close, Plymouth, Devon, England
Tel ++44 (0) 1752 701201 Fax ++44 (0) 1752 790058

NAME	S.Almond	SCALE	NTS
DATE	26/03/08	DIMS IN	mm (in)
TITLE	2 WAY OUTLET SLEEVE		

ADHESIVE	A3	SHT. 1
	ORIGINAL SHEET SIZE 420mm x 297mm	OF 1 SHTS.
PART No.	203	DRAWING No.
		152033